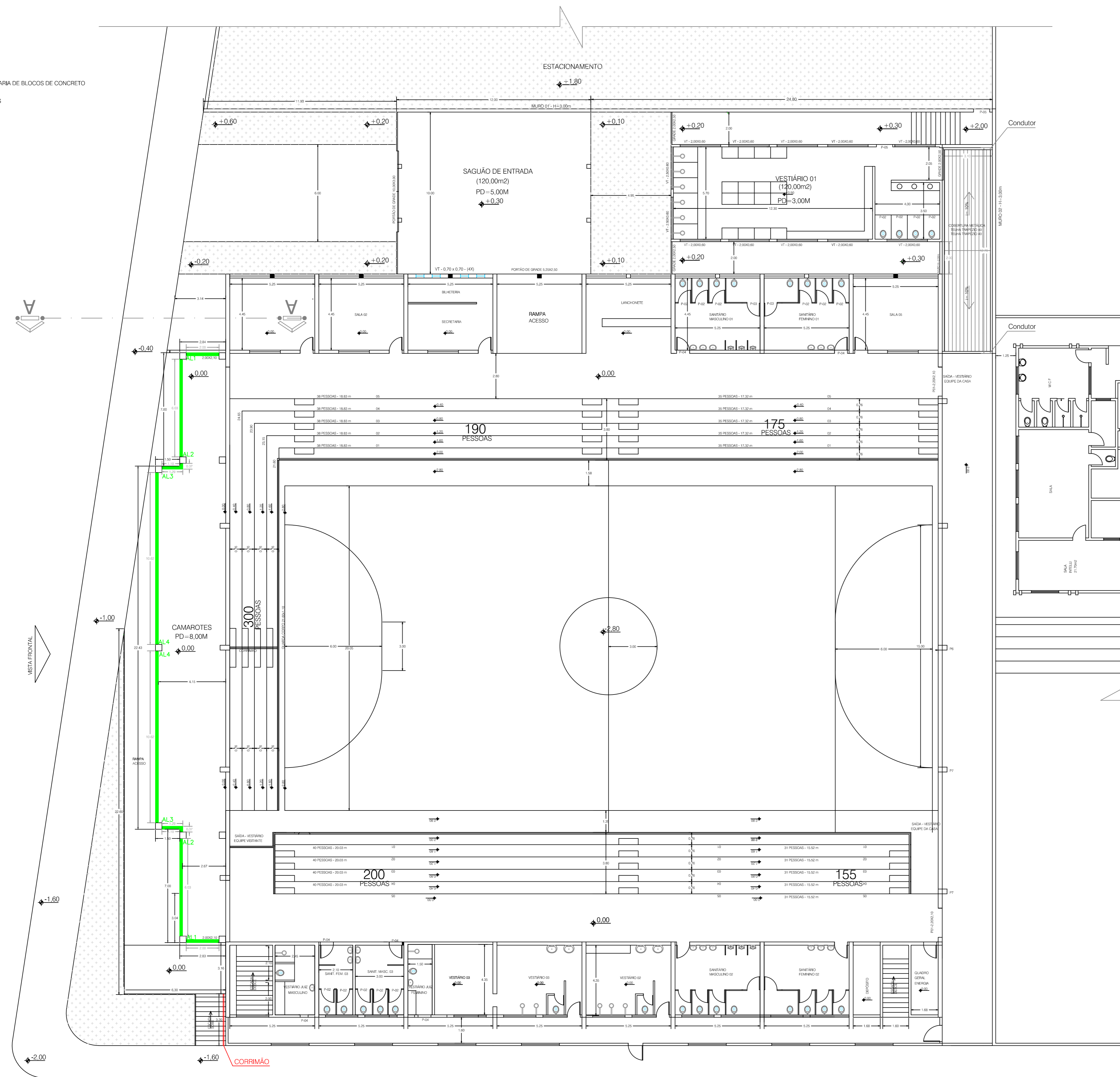
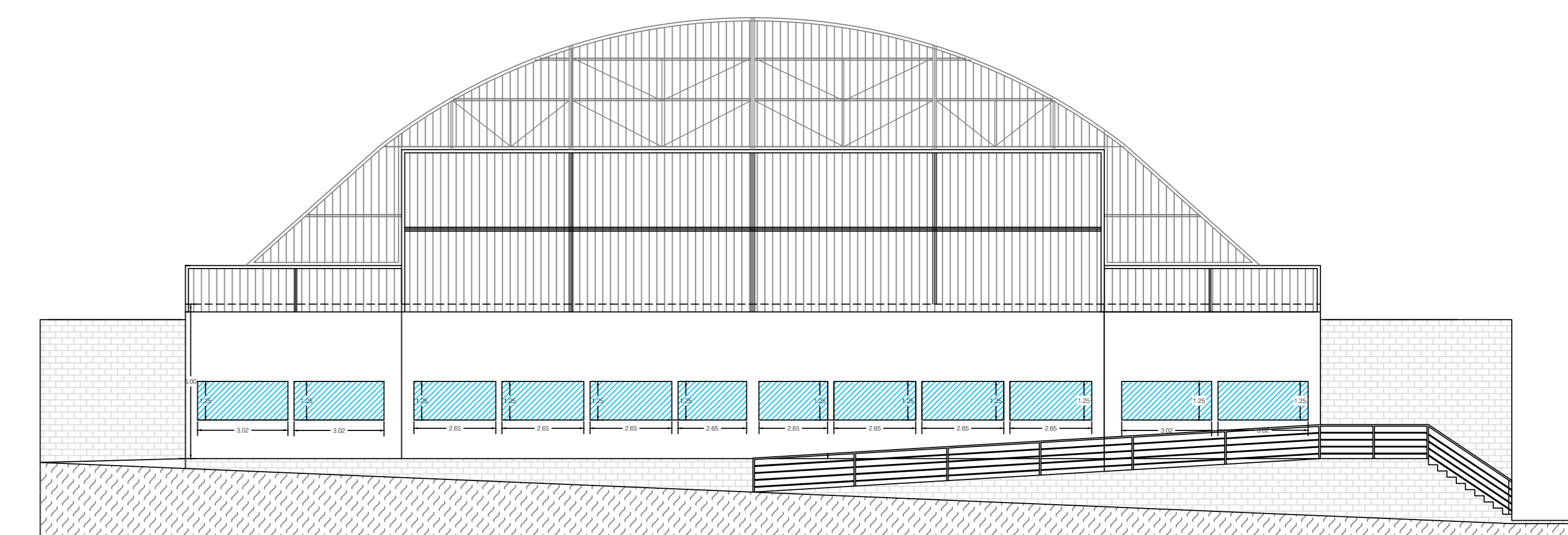
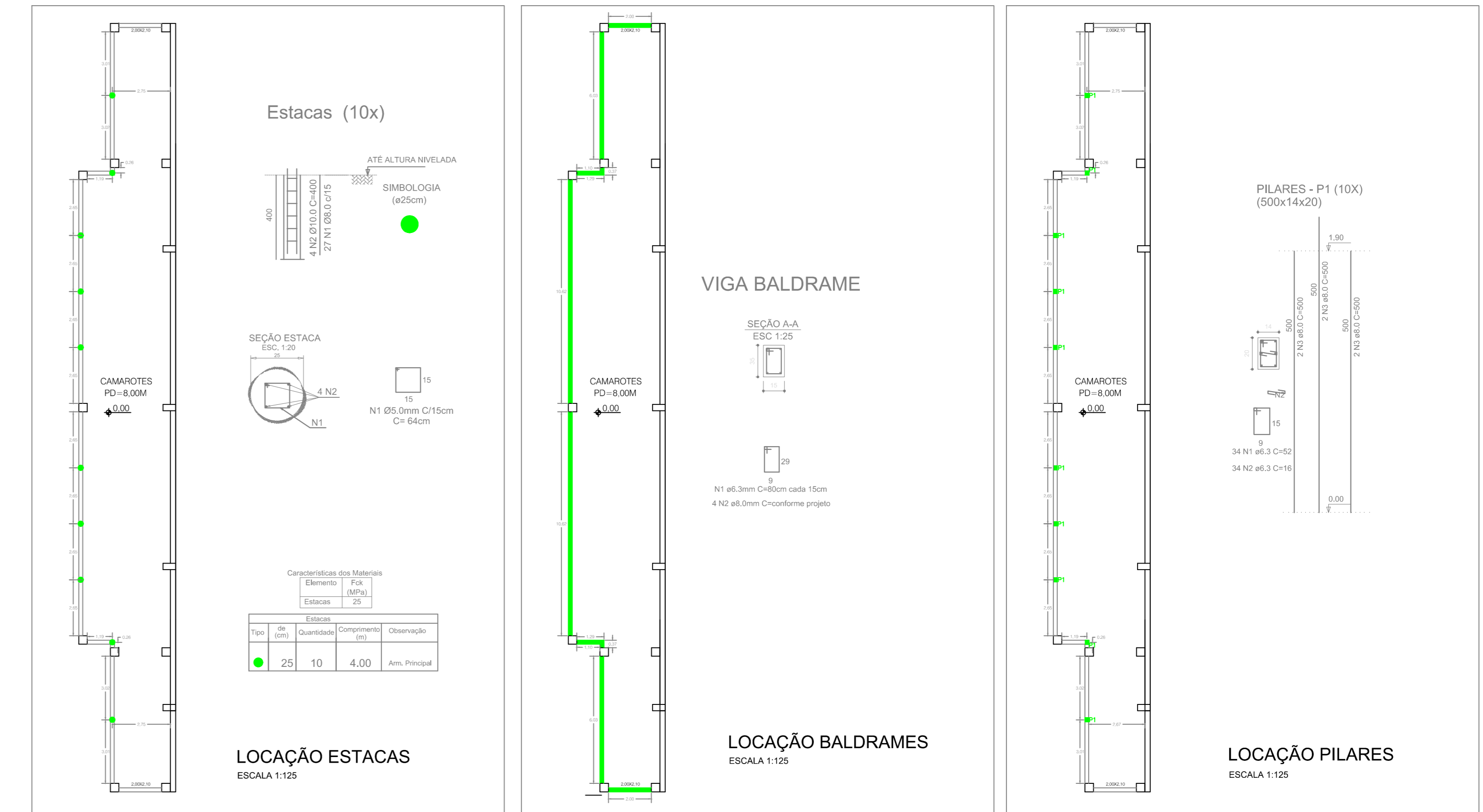


**LEGENDA**  
 ALVENARIA DE BLOCOS DE CONCRETO  
 VERGAS



**PLANTA BAIXA - REFORMA E AMPLIAÇÃO**  
 escala 1:100



**VISTA FECHAMENTO LATERAL CAMAROTE**  
 escala 1:100

PREFEITURA MUNICIPAL		SERGIO AUGUSTO BORDIN JR.	
REFORMA E AMPLIAÇÃO			
GINÁSIO MUNICIPAL DE ESPORTES			
REPROGRAMAÇÃO - PLANTA BAIXA			
ESCALA	ETAPA	DISCIPLINA	FOLHA
1:100	CAMAROTES	1ª ETAPA	01/01